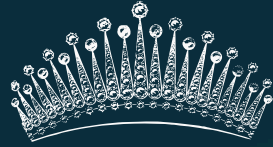


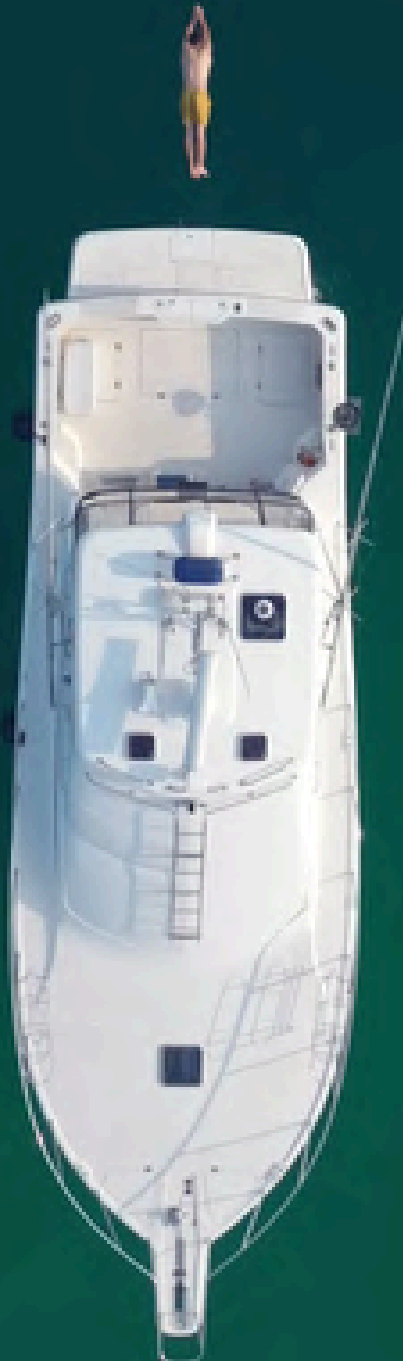
Tsubame Kotsu



CRUISE

PRIVATE

luxury and majestic vacation



Boat info

YAMAHA
38



Facilities & Services INCLUDED

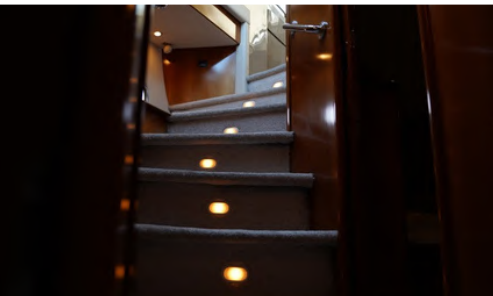
- ✓ Maximum 9 guests
- ✓ Air conditioned
- ✓ Drinks and snacks
- ✓ Onboard toilet
- ✓ Completely exclusive
- ✓ Towels and snorkels

Services EXCLUDED

- ✓ Guide arrangements
- ✓ Alcoholic drinks, food

Boat info

**CARVER
57**

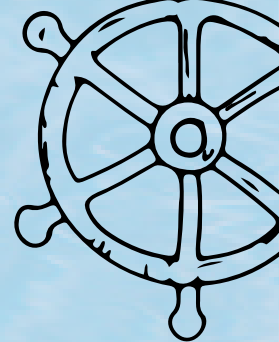


Facilities & Services INCLUDED

- ✓ Maximum 12 guests
- ✓ Air conditioned
- ✓ Drinks and snacks
- ✓ Onboard toilet
- ✓ Completely exclusive
- ✓ Towels and snorkels

Services EXCLUDED

- ✓ Guide arrangements
- ✓ Alcoholic drinks, food



How to order



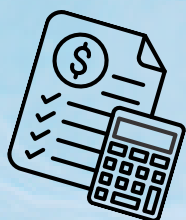
01

Inquiry

Please contact us by email or phone call.

✉ marine@tsubame.co.jp

☎ +81-82-221-8180



02

Plan & Estimate

Discuss the itinerary and budget. Please feel free to consult with us for custom-made plan based on your wishes.

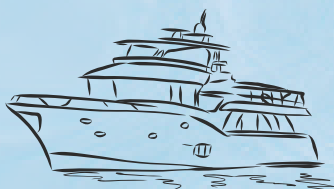


03

Reservation & Payment

Once the details are confirmed, your reservation will be official.

If there are any changes, please let us know. We also discuss various payment methods.

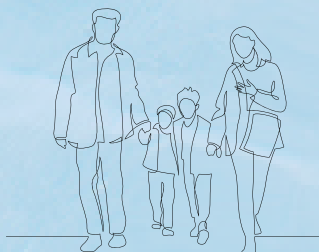


04

On the day of boarding

Enjoy your cruising!

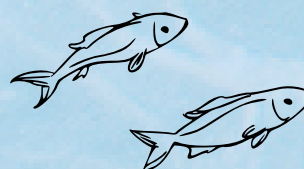
All our staff look forward to supporting you to make memorable day.



05

Follow-up

We share photos and appreciate to hear your feedback.





How to use

There are various ways to use our boat.
We will adjust to your needs, please feel free to consult.



Boat party

5 hours~ / 210,000 yen~

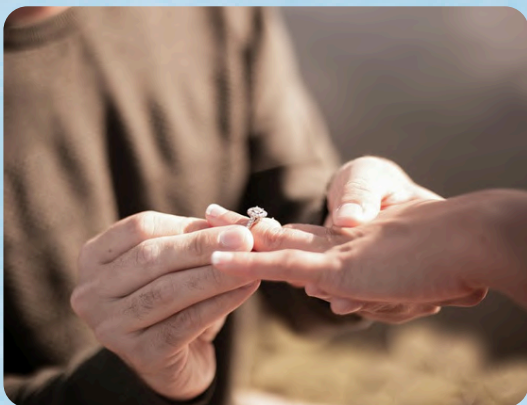
The Seto Inland Sea is calm.
We can anchor off the coast of an uninhabited island and support you to organize a party on board.
We can also arrange food and drinks.



Sunset Cruise

2 hours / 120,000 yen

Depart in the afternoon, and enjoy the scenery of sea & islands, and the climax is beautiful sunsets in the Seto Inland Sea.



Marriage Proposal

2 hours~ / 120,000 yen~

We will assist you with creating special atmosphere for your special day.
Please let us know your plan.



Business / Photography

Consult with time and usage

You can use our boat for entertaining your important clients, for business trips to the islands of the Seto Inland Sea, or for photography purposes.

Cruise Itinerary

Miyajima



Departure : Grand Prince Hotel Pier

Places : Miyajima, Hiroshima Bay

Duration : **3.5 hours**

Fare : **150,000 yen~**

START



HIROSHIMA 10:00
CITY



Board our cruise boat at the pier in front of the Grand Prince Hotel Hiroshima. On the way to Miyajima, you will pass through the south side of the island and go around island where no other tourist boats goes. Enjoy the scenery of God's island on the Seto Inland Sea.



MIYAJIMA 11:00-13:00



You can approach the Great Torii Gate by boat and view it from the sea. We also ensure that you have plenty of time to spend on Miyajima island, so that you can enjoy a stroll around this World Heritage Site.



HIROSHIMA 13:30
CITY

Please disembark from the cruise boat at the pier in front of the Grand Prince Hotel.

FINISH

Cruise Itinerary

Kure - Miyajima



Departure : Grand Prince Hotel Pier

Places : Kure, Miyajima, Hiroshima Bay

Duration : **4 hours**

Fare : **180,000 JPY~**

START



HIROSHIMA 10:00
CITY



Please board the cruise boat at the pier in front of the Grand Prince Hotel.



KURE 10:30-11:00



You can see the ships of the Japan Maritime Self-Defense Force from our boat. You can observe submarines and various types of ships.



MIYAJIMA 11:30-13:30



You can approach the Great Torii Gate by boat and view it from the sea. We also ensure that you have plenty of time to spend on Miyajima island, so that you can enjoy a stroll around this World Heritage Site.

HIROSHIMA 14:00
CITY



Please disembark from the cruise boat at the pier in front of the Grand Prince Hotel.

FINISH

Cruise Itinerary

Shimose Art Museum – Miyajima



Departure : Grand Prince Hotel Pier

Places : Shimose Art Museum, Miyajima

Duration : **5 hours**

Fare : **210,000 yen~**

START



HIROSHIMA 10:00
CITY



Please board the cruise boat at the pier in front of the Grand Prince Hotel.



SHIMOSE 11:00-12:00
ART MUSEUM



The museum is a work of art itself, featuring eight movable galleries that appear to float on water in a design by Shigeru Ban that was inspired by the islands of Setouchi.



MIYAJIMA 12:30-14:30



You can approach the Great Torii Gate by boat and view it from the sea. We also ensure that you have plenty of time to spend on Miyajima island, so that you can enjoy a stroll around this World Heritage Site.

HIROSHIMA 15:00
CITY

Please disembark from the cruise boat at the pier in front of the Grand Prince Hotel.

FINISH

Cruise Itinerary

Kure - Okurokami - Miyajima



Departure : Grand Prince Hotel Pier

Places : Kure, Okurokami Island, Miyajima

Duration : **5 hours**

Fare : **210,000 yen~**

START



● HIROSHIMA CITY 10:00



Please board the cruise boat at the pier in front of the Grand Prince Hotel.

● KURE 10:30-11:00



You can see the ships of the Japan Maritime Self-Defense Force from the ship. You can observe submarines and various types of ships.

● OKUROKAMI ISLAND 11:45-12:30



We will anchor in a calm spot on the north side of Okurokami Island. You will have time to enjoy eating, drinking and chatting on the boat.

● MIYAJIMA 13:00-14:30

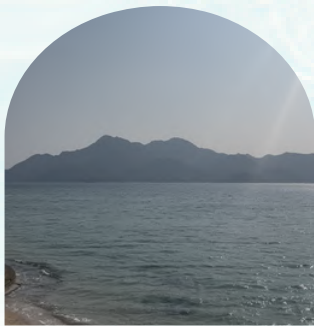


You can approach the great torii gate by boat and view it from the sea. Enjoy a stroll through the World Heritage site.

● HIROSHIMA CITY 15:00

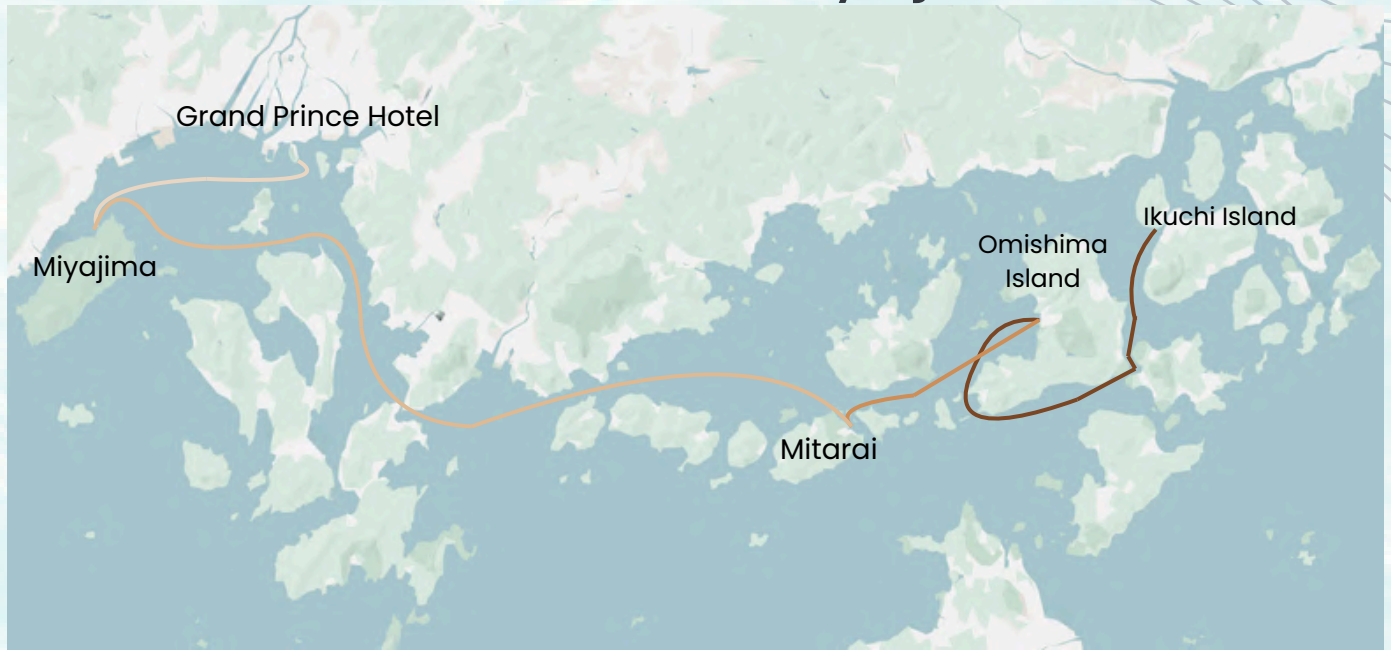
Please disembark from the cruise boat at the pier in front of the Grand Prince Hotel.

FINISH



Cruise Itinerary

Shimanami - Miyajima



Departure : Grand Prince Hotel Pier

Places : Omishima, Mitarai, Miyajima

Duration : **8 hours**

Fare : **360,000 JPY~**

START



● SETODA PORT 9:30



Please get on board at Setoda Port. We will provide lunch box and you can enjoy it on our boat while cruising.



● OMISHIMA ISLAND 10:30-11:30



You can stroll around Oyamazumi Shrine in Omishima island and the surrounding town, which is the most spiritual place in the area.



● MITARAI 12:00-13:00



During the Edo period, it flourished as a port where to wait for the wind and tide, and designated as an Important Preservation District for Groups of Traditional Buildings. You can enjoy Japanese cultural scenery.

● MIYAJIMA 14:30-16:00



You can approach the great torii gate by boat and view it from the sea. Enjoy a stroll through the World Heritage site.

● HIROSHIMA CITY 16:30



Please disembark from the cruise boat at the pier in front of the Grand Prince Hotel.

FINISH

Cruise Itinerary

Tailor Made



Departure : On your request

Places : Seto Inland Sea

Duration : On your request

Fare : According to your budget

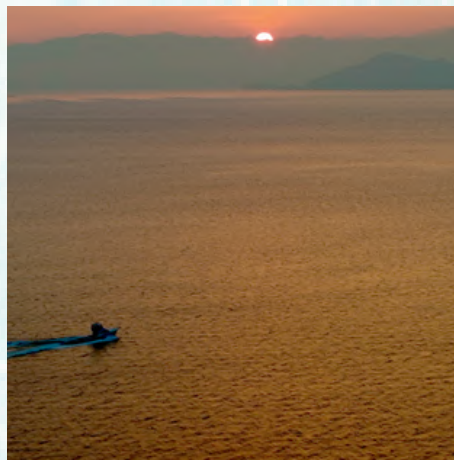
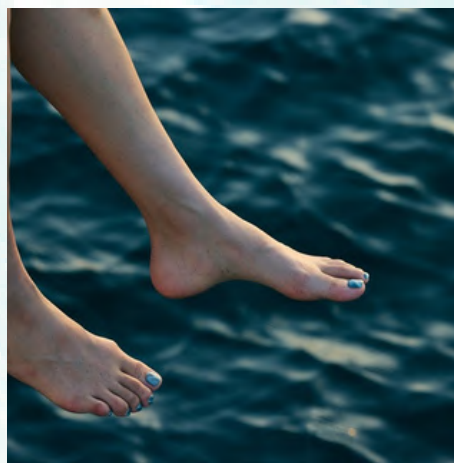
We can customize your cruising trip to suit your budget, wishes, and purpose. We also offer longer distance voyages based in Hiroshima. Please feel free to consult us.



HIROSHIMA

Have a nice Cruise!

H i r o s h i m a



CONTACT US



+81-82-221-8180



marine@tsubame.co.jp



@hiroshima.cruise.tsubame



www.tsubame.co.jp/service/marine



4-5-10 Ushida Honmachi, Higashi
Ward, Hiroshima City



Reservation: 1 week in advance



Cancellation policy (free in case of bad weather)
7 days before: 30%, 2 days before: 50%, on the day: 100%



MONDAY TO SATURDAY

9:00 am ~ 17:30 pm